



Your insights  
can change the  
future of  
cancer support

Did your cancer experience  
include the social support  
you needed?

Did you experience  
problems accessing care?

Did caregiving impact  
your quality of life?

## Participate in Important Research

**The Cancer Experience Registry (CER)** survey from Cancer Support Community (CSC) uncovers the emotional, physical, practical, and financial impact of cancer to help patients and caregivers get the support they need. Through the CER survey, we reach those impacted by cancer so their voices can be part of this important research and so that together, we can:



Influence healthcare  
policies



Enhance cancer care



Improve support  
services

# How It Works

# 1

Start the survey by selecting patient or caregiver



# 2

Answer questions about your cancer experience



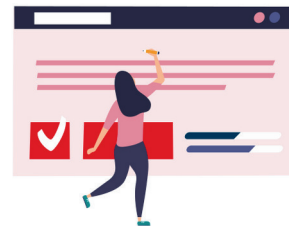
# 3

Start and stop when you like by using the unique link emailed to you



# 4

Be invited to take part in follow-up surveys or other research and programs applicable to you



The survey takes 35 minutes to complete.



Use the QR code to take the survey!

## Frequently Asked Questions

### What is the Cancer Experience Registry?

The Cancer Experience Registry (CER) is an online research survey that helps enhance cancer care, improve health care policies, and ensure support services better reflect the needs of people affected by cancer.

**Who can take the survey?** The CER is open to any adult who has been diagnosed with cancer at any point in their life or has been a family or informal caregiver to someone with cancer. Participants must live in the United States, a U.S. territory, or Canada and be able to read and understand English.

**What about my privacy?** The survey is an Institutional Review Board (IRB) approved research study, which means that the confidentiality, rights and welfare of participants are protected.

**Is there a cost to take part?** No, there is no cost to take part in this research.

**What is the benefit to taking part?** By generously giving your time for this important research, your contributions help deliver better outcomes for those impacted by cancer, now and in the future.

### What happens when I've finished the survey?

Once you complete the survey, you become part of a registry of patients and caregivers with the opportunity to complete follow-up surveys that track changes over time, or additional surveys that ask about emerging topics in cancer care.

Help change the future  
of cancer support by  
taking the CER survey



**GILDA'S  
CLUB**



**NEVADA CANCER  
COALITION**

